

$Pmm2$

C_{2v}^1

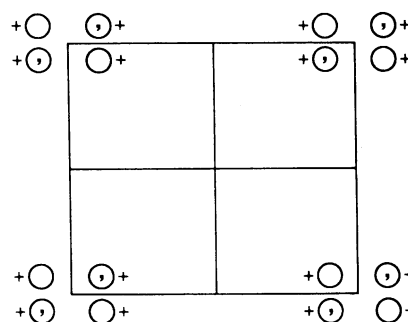
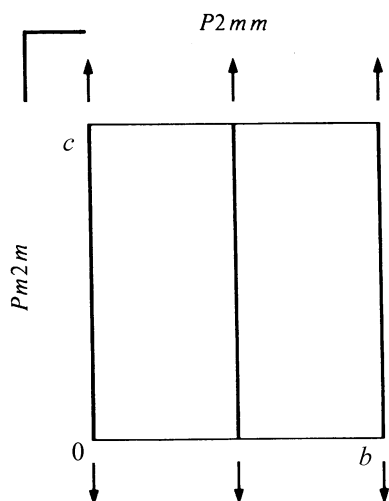
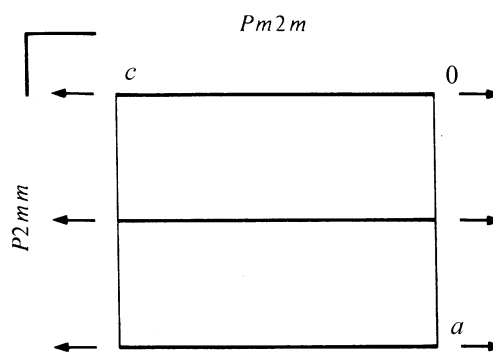
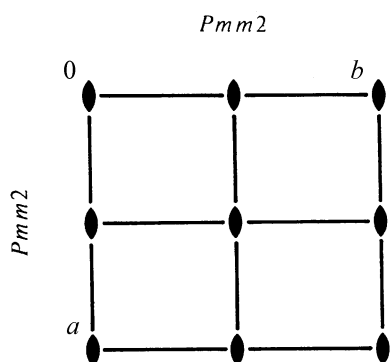
$mm2$

Orthorhombic

No. 25

$Pmm2$

Patterson symmetry $Pmmm$



Origin on $mm2$

Asymmetric unit $0 \leq x \leq \frac{1}{2}; 0 \leq y \leq \frac{1}{2}; 0 \leq z \leq 1$

Symmetry operations

- (1) 1 (2) 2 $0,0,z$ (3) m $x,0,z$ (4) m $0,y,z$

Generators selected (1); $t(1,0,0)$; $t(0,1,0)$; $t(0,0,1)$; (2); (3)

Positions

Multiplicity,
Wyckoff letter,
Site symmetry

Coordinates

Reflection conditions

4 *i* 1 (1) x,y,z (2) \bar{x},\bar{y},z (3) x,\bar{y},z (4) \bar{x},y,z

General:

no conditions

Special: no extra conditions

2	<i>h</i>	<i>m</i> . .	$\frac{1}{2},y,z$	$\frac{1}{2},\bar{y},z$	1	<i>d</i>	<i>m m 2</i>	$\frac{1}{2},\frac{1}{2},z$
2	<i>g</i>	<i>m</i> . .	$0,y,z$	$0,\bar{y},z$	1	<i>c</i>	<i>m m 2</i>	$\frac{1}{2},0,z$
2	<i>f</i>	. <i>m</i> .	$x,\frac{1}{2},z$	$\bar{x},\frac{1}{2},z$	1	<i>b</i>	<i>m m 2</i>	$0,\frac{1}{2},z$
2	<i>e</i>	. <i>m</i> .	$x,0,z$	$\bar{x},0,z$	1	<i>a</i>	<i>m m 2</i>	$0,0,z$

Symmetry of special projections

Along $[001]$ $p2mm$
 $\mathbf{a}' = \mathbf{a}$ $\mathbf{b}' = \mathbf{b}$
Origin at $0,0,z$

Along $[100]$ $p1m1$
 $\mathbf{a}' = \mathbf{b}$ $\mathbf{b}' = \mathbf{c}$
Origin at $x,0,0$

Along $[010]$ $p11m$
 $\mathbf{a}' = \mathbf{c}$ $\mathbf{b}' = \mathbf{a}$
Origin at $0,y,0$