

$\mu 2mg$

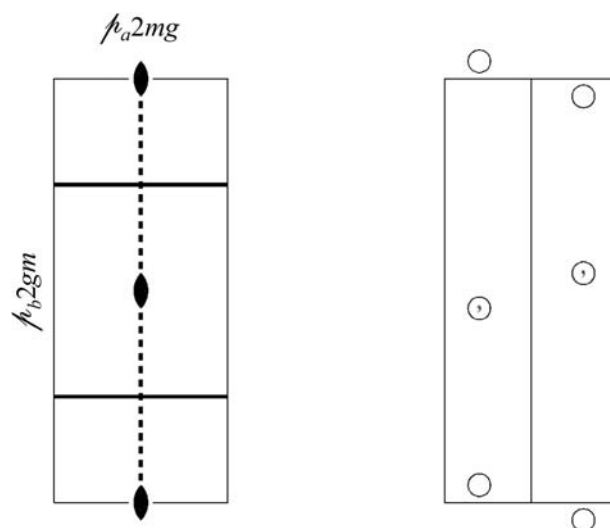
$2mm$

Rectangular

No. 7

$\mu 2mg$

Patterson symmetry $\mu 2mm$



Origin at $21g$

Asymmetric unit $0 \leq x \leq \frac{1}{4}$

Symmetry operations

(1) 1 (2) $2 \ 0,0$ (3) $m \ \frac{1}{4},y$ (4) $g \ x,0$

Generators selected (1); $t(1)$; (2); (3)

Positions

Multiplicity,
Wyckoff letter,
Site symmetry

Coordinates

Reflection conditions

4 $c \ 1$ (1) x,y (2) \bar{x},\bar{y} (3) $\bar{x} + \frac{1}{2},y$ (4) $x + \frac{1}{2},\bar{y}$

General:

$h : h = 2n$

Special: no extra conditions

2 $b \ .m.$ $\frac{1}{4},y$ $\frac{3}{4},\bar{y}$

2 $a \ 2..$ $0,0$ $\frac{1}{2},0$

Symmetry of special projections

Along $[10] \ m$

Along $[01] \ \mu m$

Origin at $x,0$

$\mathbf{a}' = \frac{1}{2}\mathbf{a}$

Origin at $0,y$

Maximal non-isotypic subgroups

I $[2] \mu 11g(5) \ 1; 4$
 $[2] \mu 1m1(3) \ 1; 3$
 $[2] \mu 211(2) \ 1; 2$

IIa none

IIb none

Maximal isotypic subgroups of lowest index

IIc $[3] \mu 2mg (\mathbf{a}' = 3\mathbf{a}) (7)$

Minimal non-isotypic supergroups

I none

II $[2] \mu 2mm (\mathbf{a}' = \frac{1}{2}\mathbf{a}) (6)$