

$\mu 2mg$

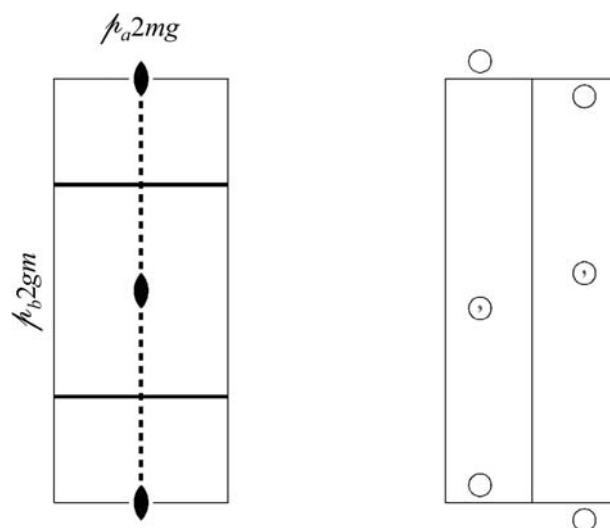
$2mm$

Rectangular

No. 7

$\mu 2mg$

Patterson symmetry  $\mu 2mm$



Origin at  $21g$

Asymmetric unit  $0 \leq x \leq \frac{1}{4}$

Symmetry operations

- (1)  $1$  (2)  $2 \ 0,0$  (3)  $m \ \frac{1}{4},y$  (4)  $g \ x,0$   
 (1|0,0) (2|0,0) ( $m_x|\frac{1}{2},0$ ) ( $m_y|\frac{1}{2},0$ )

Generators selected (1);  $t(1)$ ; (2); (3)

Positions

Multiplicity,  
Wyckoff letter,  
Site symmetry

Coordinates

Reflection conditions

4  $c \ 1$  (1)  $x,y$  (2)  $\bar{x},\bar{y}$  (3)  $\bar{x} + \frac{1}{2},y$  (4)  $x + \frac{1}{2},\bar{y}$

General:

$h : h = 2n$

Special: no extra conditions

2  $b \ .m.$   $\frac{1}{4},y$   $\frac{3}{4},\bar{y}$

2  $a \ 2..$   $0,0$   $\frac{1}{2},0$

Symmetry of special projections

Along  $[10] \ m$

Along  $[01] \ \mu m$

Origin at  $x,0$

$\mathbf{a}' = \frac{1}{2}\mathbf{a}$

Origin at  $0,y$

Maximal non-isotypic subgroups

- I**  $[2]\mu 11g(5)$  1; 4  
 $[2]\mu 1m1(3)$  1; 3  
 $[2]\mu 211(2)$  1; 2

**IIa** none

**IIb** none

Maximal isotypic subgroups of lowest index

**IIc**  $[3]\mu 2mg(\mathbf{a}' = 3\mathbf{a})(7)$

Minimal non-isotypic supergroups

**I** none

**II**  $[2]\mu 2mm(\mathbf{a}' = \frac{1}{2}\mathbf{a})(6)$