

3. METHODOLOGY

$$\sum_{k=1}^K \mathbf{W}_k^2 = \mathbf{KI}. \quad (3.8.35)$$

The INDSCAL method employs an iterative technique to solve equation (3.8.7) in which one parameter is kept fixed whilst the other is determined by least-squares refinement. An initial estimate for \mathbf{G} is taken either from the average of the \mathbf{D} matrices for each sample or as a random matrix. This is then used to estimate the weight matrices, and the whole process repeated until a minimum value of S is obtained. The algorithm derived by Carroll and Chang was used in the example below. When random matrices are used to generate the initial \mathbf{G} matrix, the INDSCAL procedure is repeated 100 times and the solution with the minimum value of S is kept. In practice, there is very little difference in the results of these two procedures. The resulting \mathbf{G} matrix is used as a standard-distance matrix, and used in the standard way to generate dendrograms, MMDS plots *etc.* The method has the property that where data types show samples to be very similar this is reinforced, whereas where there are considerable variations the differences are accentuated in the final \mathbf{G} matrix. For a fuller description of the INDSCAL method with examples see Gower & Dijksterhuis (2004), Section 13.2, and for a useful geometric interpretation see Husson & Pagès (2006).

3.8.9.1. An example combining PXRD and Raman data

We now present an example of the INDSCAL method applied to data collected on sulfathiazole using PXRD and Raman spectroscopy (Barr, Cunningham *et al.*, 2009). A flowchart is shown in Fig. 3.8.15. Three polymorphs of sulfathiazole were prepared and PXRD data were collected on a Bruker C2 GADDS system. Each sample was run for 2 min over a 3–30° range in 2θ using Cu $K\alpha$ radiation. Raman data were collected on a Bruker SENTINEL. The Raman probe was integrated into the PXRD instrument.

The only data pre-processing performed was background removal. Fig. 3.8.16(a) shows the resulting dendrogram (with the default cut level) and Fig. 3.8.16(b) shows the corresponding MMDS plot. To identify each sample they are numbered *via* a four-digit code: the first two digits are the well number, and the last digit defines whether the sample is form 2, 3 or 4 of sulfathiazole. It can be seen that the clustering is only partly successful: form 4 (red) is correctly clustered; form 3 (orange) gives five clusters and form 2 gives three clusters.

Fig. 3.8.16(c) shows the clustering from the Raman spectra. The results are poor: most of form 2 is correctly clustered, but forms 4 and 3 are intermixed, and the MMDS plot in Fig. 3.8.16(d) is diffuse with little structure.

The INDSCAL method is now applied starting from random \mathbf{G} matrices and the results are shown in Fig. 3.8.16(e) and (f) with the dendrogram cut level at its default value. The clustering is almost correct; all the samples are placed in the correct groups except that there are two outliers coloured in blue. Fig. 3.8.16(g) shows the Raman patterns for these samples: they are primarily background with very little usable signal.

3.8.10. Quality control

Quality control (Gilmore, Barr & Paisley, 2009) is designed for situations where the stability of a material is being monitored over time, for example as part of a production-line system, or for periodic equipment alignment. A set of reference patterns is collected that represents acceptable measurements – any

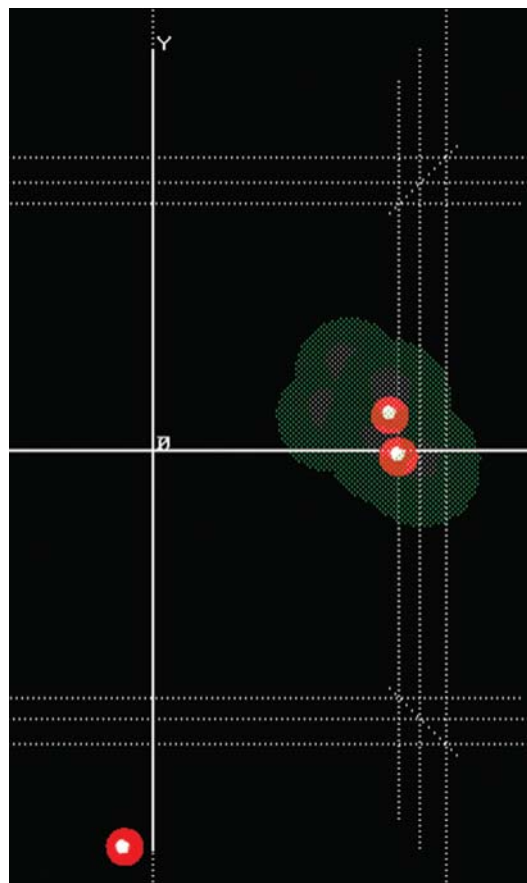


Figure 3.8.17

Visualization tools for quality-control procedures using a modified MMDS plot. The red outlier is a sample unacceptably far from the cluster of reference measurements.

measurement sufficiently close to these references represents a good measurement. Various sample patterns are then imported and compared with those reference patterns, and any that vary significantly from the ideal are noted and highlighted.

The results are best displayed graphically using a variant of the MMDS method, of which an example is shown in Fig. 3.8.17. The reference patterns define a green shaded surface with acceptable sample patterns, coloured red, shown within it, and potentially problematic sample patterns appearing outside it. The volume of the green shape is defined by intersecting spheres around each reference sample and these can be altered to allow more- or less-stringent quality control.

3.8.11. Computer software

These calculations can be carried out using MATLAB (<http://www.mathworks.co.uk/products/matlab/>) or the open-source R software (<http://www.r-project.org/>; Crawley, 2007) with graphics using the *GGobi* software (Cook & Swayne, 2007). There are four commercial packages for handling powder data: *DIFFRAC.EVA* and *PolySNAP 3*, both from Bruker (<http://www.bruker.com/>; Gilmore, Barr & Paisley, 2004; Barr, Dong & Gilmore, 2009), *Jade* from Materials Data Inc. (<http://www.materialsdata.com>) and *HighScore* from Malvern PANalytical (<http://www.panalytical.com/>).

Data were kindly provided by Gordon Cunningham at Glasgow University, Arnt Kern of Bruker AXS in Karlsruhe and Michael Herrman at the Fraunhofer Institute, Germany.